

002-K-02-3112
COMPRESSOR FRAME

MFG: ARIEL
MODEL: KBZ/6
RATED POWER: 7800 HP @ 1000 RPM
STROKE: 6.75 in.
ROD LOAD, TOTAL: 150,000 lbs.
ROD LOAD, COMPRESSION: 80,000 lbs.
ROD LOAD, TENSION: 75,000 lbs.
S/N: F-41600

002-KM-02-3113
COMPRESSOR MOTOR

MFG: CATERPILLAR
MODEL: G3606LE
BORE: 11.8 IN.
STROKE: 11.8 IN.
DISPLACEMENT: 7,762 IN CU.
COMP RATIO: 9:1
POWER: 1775 BHP @ 1000 RPM
S/N: 4ZS01787

002-CFM-02-3116/17
COOLER FAN MOTORS

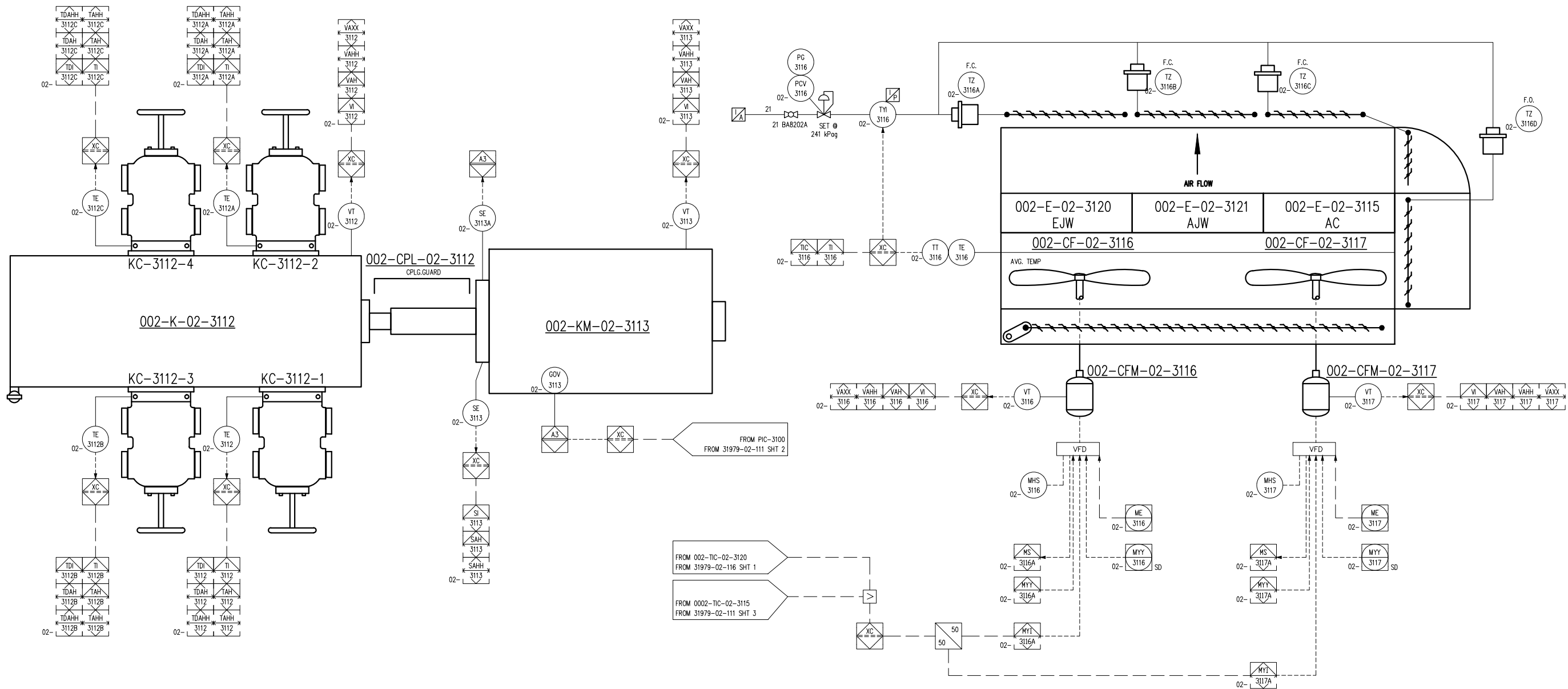
POWER: 30 HP @ 1800 RPM
575 VAC PH/60 Hz
IEEE841, VFD COMPATIBLE

002-CF-02-3116/17
PACKAGE COOLER FANS

MFG: AIR-X-LIMITED
MODEL: 144-2ZF
TYPE: FORCED DRAFT
REQ'D AIR FLOW: 280,225 SCFM
FAN TYPE: 2 MOORE, 10K-42EC,
144 DIA X 8 BLADE
FAN POWER: 22.4 HP @ 200 RPM
FAN BLADE PITCH: 13.6 DEGREES
AMBIENT AIR: 95°F
NOISE: 77 dBA @ 1m

002-CPL-02-3112
COMPRESSOR ENGINE COUPLING

MAKE: REXNORD
MODEL: 800 CMR



**FINAL
AS BUILT**
NAME: C.SMITH DATE: JAN 02/14

	4	FINAL AS BUILT	JAN 02/13	CS	LD	DATE	JAN 23/13	SCALE	NTS	DEVON CANADA FERRIER CPF DEEP CUT FEED CATERPILLAR G3606LE ARIEL JGD/4-1 SWEET	ENERFLEX Calgary, Alberta, Canada	P & I DIAGRAM DRIVE TRAIN/ CONTROL PANEL						
	3	FINAL AS BUILT	NOV 13/13	AR	LD	DRAWN BY	G.PAHL	CHECKED BY	S.GURI				APPROVED BY	B.MINSHULL				
	2	REVISED TAGGING	JUL 09/13	CS	SG	PROJECT MANAGER	B.MINSHULL	PROJECT ENGINEER	S.GURI									
	1	ISSUED FOR CONSTRUCTION	JUL 03/13	CS	SG													
	0	ISSUED FOR CONSTRUCTION	APR 19/13	AT	SG	CUST PO												
	B	ISSUED FOR HAZOP	MAR 08/13	AT	SG													
	REV	DESCRIPTION	DATE	BY	APR	APEGGA PERMIT No: P8651			OPER. CODE	490 511 591	WORK ORDER	31979-01	DWG NO	31979-02-112	SHT	1	REV	4