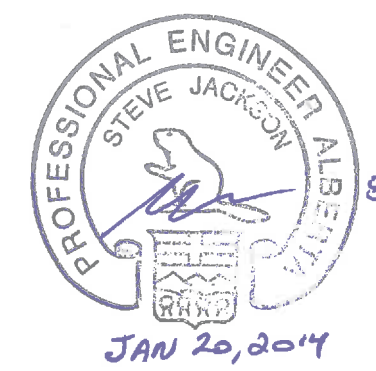
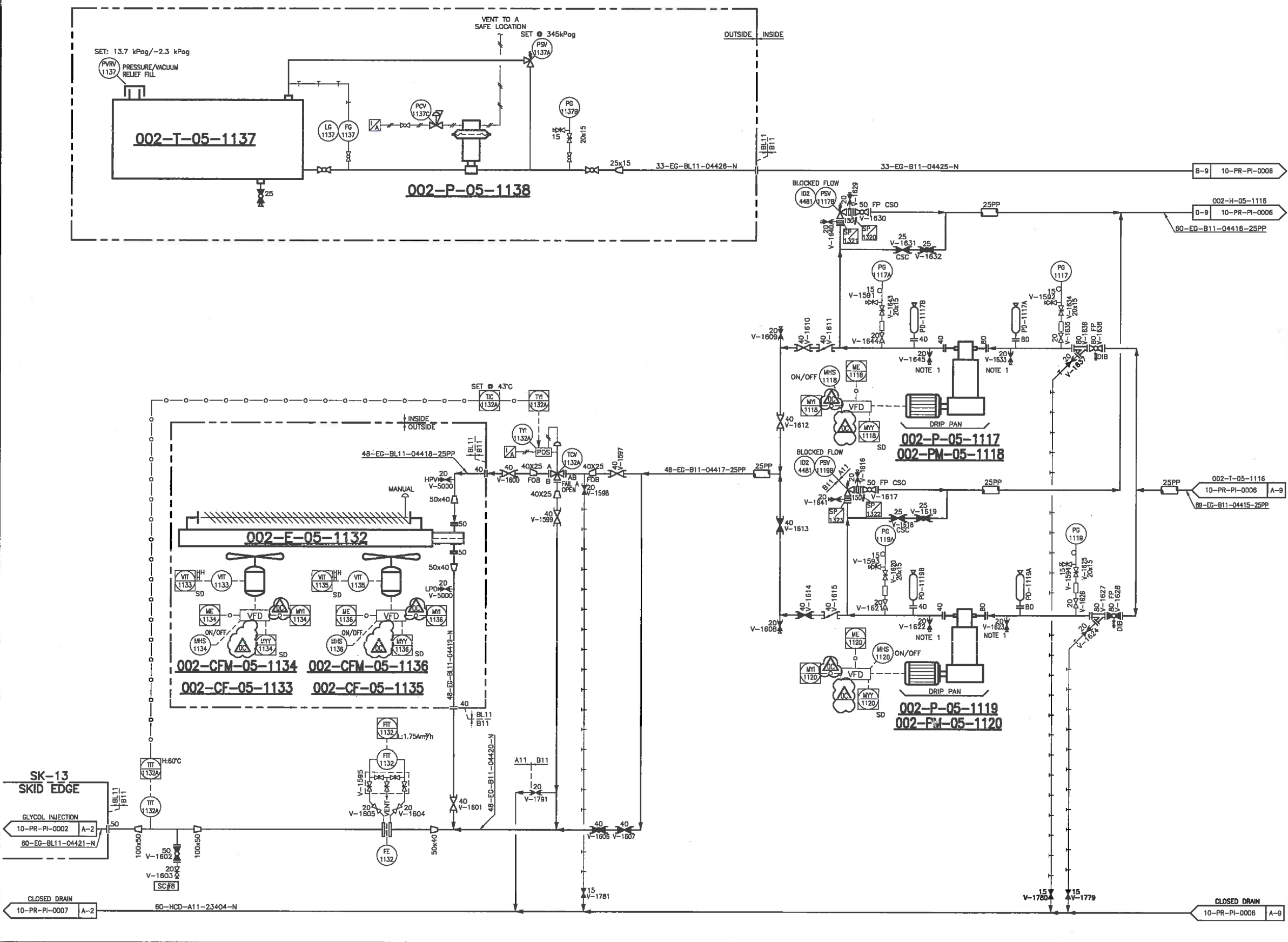


UPDATED: Wednesday, November 13, 2013 9:43:14 AM BY: Manual
PRINTED: Monday, January 20, 2014 9:15:28 AM DWG NAME: H:\PROJECTS New NUS\Design Drafting\General\PR-10-PR-PI-0008 Rev 00.dwg
PROJECT: FERRIER CENTRAL PROCESSING FACILITY
CLIENT: DEVON CANADA c/o WORLEY PARSONS
DOCUMENT NAME: GLYCOL REGENERATION PIPING AND INSTRUMENTATION DIAGRAM
THERMO DESIGN ENGINEERING LTD.
12-118
DFR-10-PR-PI-0009

- 002-E-05-1132**
LEAN EG COOLER
TYPE: HORIZONTAL FORCED DRAFT
MODEL: 42-2ZF
DESIGN: 4481 kPag @ 93/-45°C
DUTY: 70 kW
C.A.: 1.6 mm
- 002-CFM-05-1134/1136**
LEAN EG COOLER FAN MOTORS
FAN DRIVERS: 3.7 kW @ 1800 RPM, 575V/3Ø/60Hz, VFD
002-CF-05-1133/1135
LEAN EG COOLER FANS
FANS: MOORE 10K S18 VT HD
- 002-P-05-1117/1119**
LEAN GLYCOL INJECTION PUMPS
MODEL: CLYDE-UNION, DX5 1.75x2.25
TYPE: POSITIVE DISPLACEMENT
CAPACITY: 2.5 m³/hr @ 4481 kPag ΔP
- 002-PM-05-1118/1120**
LEAN GLYCOL INJECTION PUMP MOTORS
MOTOR: 5.6 kW @ 1760 RPM, 575V/3Ø/60Hz, VFD
- 002-T-05-1137**
LEAN EG MAKE-UP TANK
CAPACITY: 1.9 m³
MAKE: BRUIN
TYPE: DOUBLE WALL STEEL TANK.
- 002-P-05-1138**
LEAN EG MAKE-UP PUMP
MODEL: BRUIN G-SERIES
TYPE: PNEUMATIC DOUBLE DIAPHRAGM
CAPACITY: 0-56 L/min

- GENERAL NOTES:**
1. DRAIN TO DRIP PAN.
 2. ALL INTERCONNECTING PIPING WITHIN SHALLOW CUT BATTERY LIMIT IS BY TDE.
 3. ALL INSTRUMENTS SYMBOLS ON THIS PID TO BE PREFIXED BY 05.



DC	REVISED AS MARKED	NOV.06/13	MFF
DD	REVISED AS MARKED	OCT.02/13	SSE
DA	REVISED AS MARKED	JUL.12/13	WV
D	RELEASED FOR FABRICATION	MAY.30/13	MFF
NO.	REVISION	DATE	BY
1	1		
PROJECT NAME			
FERRIER CENTRAL PROCESSING FACILITY			
CLIENT			
DEVON CANADA c/o WORLEY PARSONS			
DOCUMENT NAME			
GLYCOL REGENERATION PIPING AND INSTRUMENTATION DIAGRAM			
THERMO DESIGN ENGINEERING LTD.			
OIL & GAS PRODUCTION EQUIPMENT DESIGN • PROCESSING • INSTALLATION EDMONTON, ALBERTA, CANADA			
APPROX. PERMIT NUMBER: P2800			
THIS DRAWING IS THE CONFIDENTIAL PROPERTY OF TDE AND IS TO BE USED ONLY FOR THE PROJECT AND NOT BE COPIED OR COMMUNICATED TO A THIRD PARTY WITHOUT THE WRITTEN AUTHORIZATION OF TDE.			
TDE JOB NUMBER: 12-118			
DOCUMENT NUMBER: DFR-10-PR-PI-0009			
PTN	SHEET	REV	OC