

UPDATED: Monday, January 13, 2014 1:58:38 PM BY: JACK
PRINTED: Monday, January 20, 2014 9:15:23 AM DWG NAME: H:\PROJECTS New NDS\Design Drafting\General\DFR-10-PR-P-0007 Rev 00.dwg

002-E-05-1125

EG-REGEN OVERHEADS CONDENSER

SIZE: 273 mm OD x 1219 TS/TS
TYPE: NEN
DESIGN: TS: 100 kPag/FV @ 200/-29°C (NON CODE)
SS: 1034 kPag @ 93/-29°C
DUTY: 41 kW
C.A.: 1.6 mm

002-V-05-1126

EG-REGEN OVERHEADS SEPARATOR

SIZE: 610 mm OD x 1829 mm S/S
TYPE: VERTICAL, 2-PHASE
DESIGN: 100 kPag @ 93/-29°C (NON-CODE)
C.A.: 1.6 mm

002-P-05-1127/1129

EG-REGEN WATER PUMP

TYPE: VERTICAL INLINE CENTRIFUGAL
MODEL: DEANLINE
CAPACITY: 2.3 m³/hr

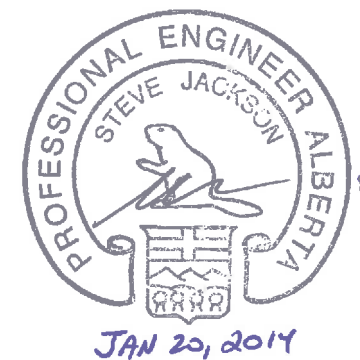
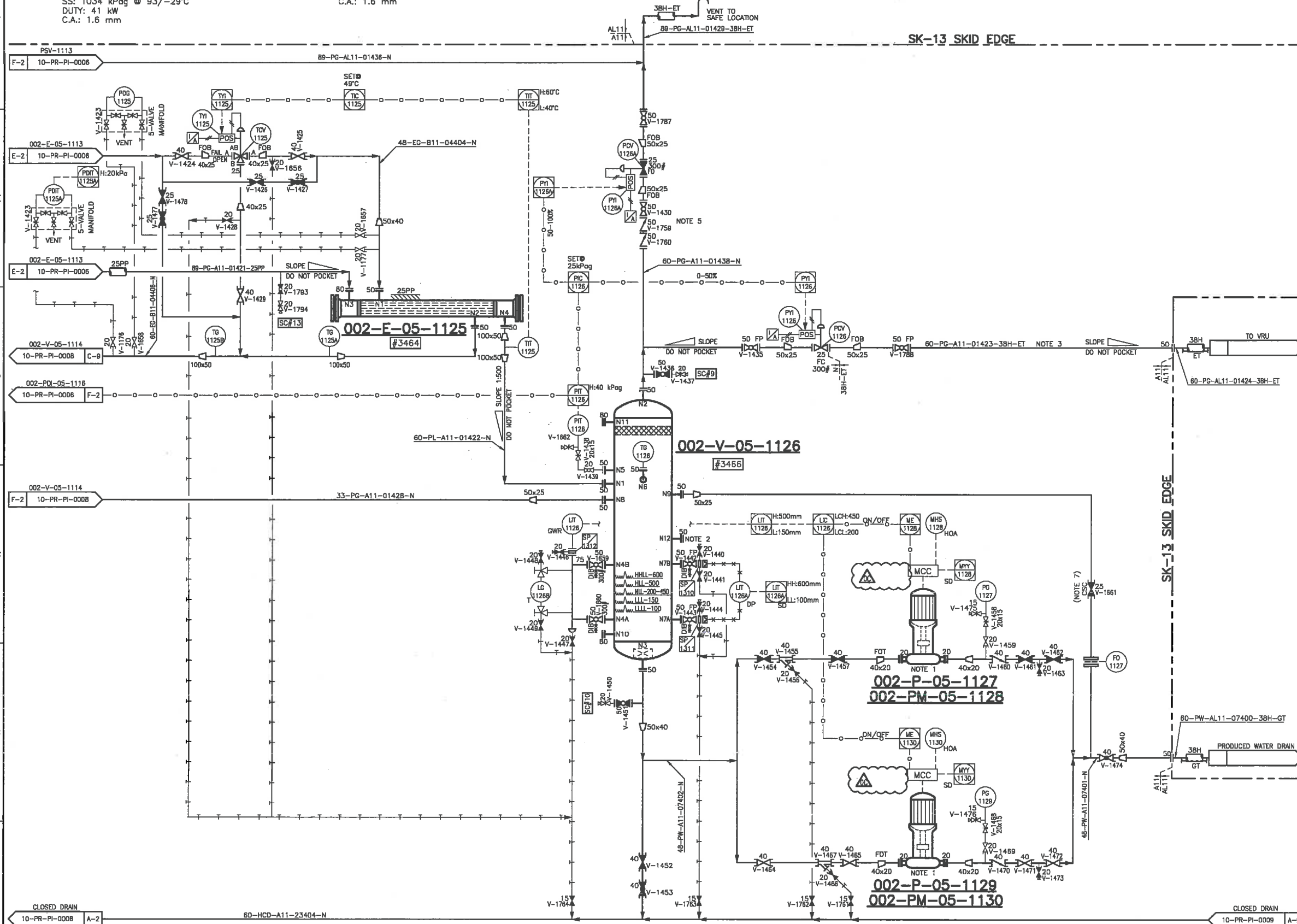
002-PM-05-1128/1130


EG-REGEN WATER PUMP MOTOR

DUTY: 1.5 kW @ 3600 RPM, 575V/3ø/60Hz

GENERAL NOTES:

1. ACTIVE PUMP 0002-P-05-1127/1129 WILL TURN ON AT THE HIGH END OF THE NLL RANGE AND TURN OFF AT THE LOW END OF THE NLL RANGE.
2. NOZZLE CONNECTION FOR FUTURE CORROSION COUPON.
3. LINE IS SLOPED AND THERE ARE NO POCKETS FROM PCV-1126 OUTLET UP TO INTERFACE OF TDE SUPPLIED PIPE RACK AND MAIN PIPE RACK. THERE IS AN ELEVATION INCREASE AT THE INTERFACE AND THEREFORE A DRIP LEG IS PROVIDED AT LOW POINT TO DRAIN ANY LIQUID ACCUMULATION. LINE IS ELECTRICALLY TRACED TO ENABLE PROPER TEMPERATURE CONTROL ABOVE GAS SATURATION TEMPERATURE.
4. ALL INTERCONNECTING PIPING WITHIN SHALLOWCUT BATTERY LIMIT IS BY TDE.
5. CHECK VALVES TO BE DISSIMILAR TECHNOLOGY.
6. ALL INSTRUMENTS SYMBOLS ON THIS PID TO BE PREFIXED BY 05.
7. VALVE TO BE CSC TO PREVENT REVERSE FLOW FROM PRODUCED WATER HEADER.



OC	REVISED AS MARKED	NOV.06/13	MFF	
OB	REVISED AS MARKED	OCT.02/13	SSE	
OA	REVISED AS MARKED	JUL.12/13	VV	
O	RELEASED FOR FABRICATION	MAY.30/13	MFF	
NO.	REVISION	DATE	BY	
ELECTRICAL	I & W	CONTROL	PROCESS	PROJECT
PROJECT NAME:				
FERRIER CENTRAL PROCESSING FACILITY				
CLIENT:				
DEVON CANADA c/o WORLEY PARSONS				
DOCUMENT NAME:				
GLYCOL REGENERATION PIPING AND INSTRUMENTATION DIAGRAM				
			P. ENG. Stamp:	
OIL & GAS PRODUCTION EQUIPMENT DESIGN • FABRICATION • INSTALLATION EDMONTON, ALBERTA, CANADA APPROX. PERMIT NUMBER: P2800				
THIS DRAWING IS THE CONFIDENTIAL PROPERTY OF TDE AND IS ISSUED ON THE UNDERSTANDING THAT NOTHING IS TO BE COPIED OR COMMUNICATED TO A THIRD PARTY WITHOUT THE WRITTEN AUTHORIZATION OF TDE.				
TDE JOB NUMBER:				
12-118				
DOCUMENT NUMBER:		ITEM:	SHEET:	REV:
DFR-10-PR-PI-0007			OC