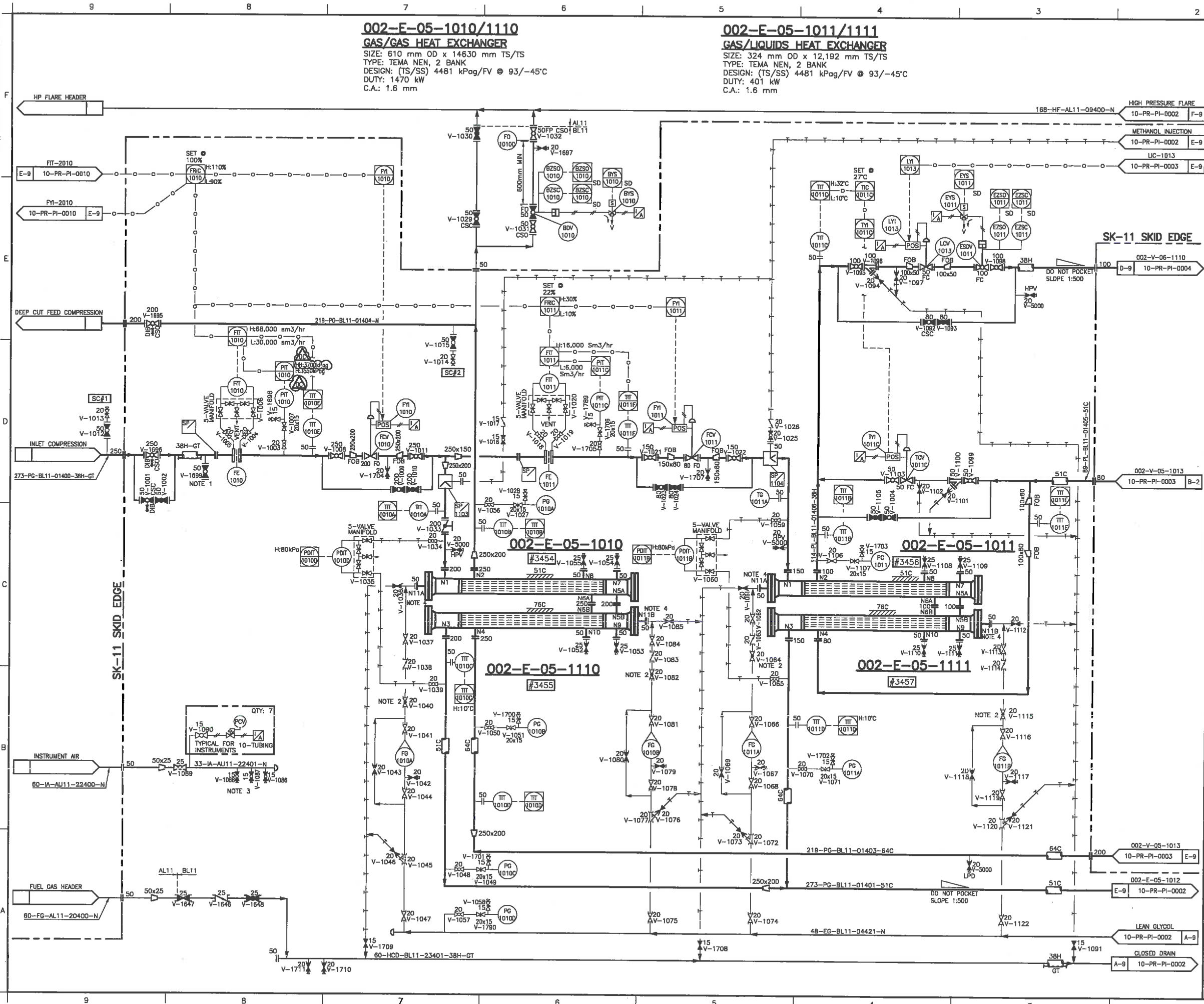
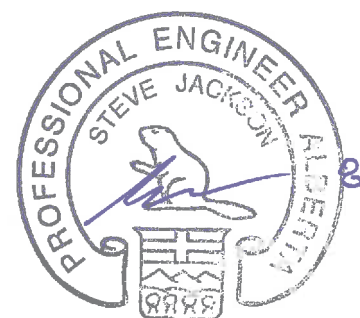



UPDATED: Wednesday, November 13, 2013 9:33:42 AM 37: Manual
PRINTED: Monday, January 20, 2014 9:14:51 AM DWG NAME: H:\PROJECTS New\005\Design\Drilling\General\DRF\PI\DRF-10-PR-PI-0001 Rev. 00.dwg



- GENERAL NOTES:**
1. FUEL GAS PURGE AT GRADE.
 2. GLOBE VALVE TO BE VISIBLE FROM FG.
 3. EACH INSTRUMENT AIR BRANCH HEADER TO INCLUDE 2 SPARE VALVE CONNECTIONS AND AN ADDITIONAL VALVE AT THE END OF THE HEADER FOR BLOWDOWN.
 4. GLYCOL INJECTION NOZZLE TO BE RETRACTABLE.
 5. LOW POINT DRAINS/ HIGH POINTS VENTS ADDED WHERE REQUIRED.
 6. ALL INTERCONNECTING PIPING WITHIN SHALLOWCUT BATTERY LIMIT IS BY TDE.
 7. ALL INSTRUMENTS SYMBOLS ON THIS PID TO BE PREFIXED BY 05.



OC	REVISED AS MARKED	NOV.06/13	MFF
OB	REVISED AS MARKED	OCT.02/13	SSE
OA	REVISED AS MARKED	JUL.11/13	WV
0	RELEASED FOR FABRICATION	MAY.30/13	MFF
NO.	REVISION	DATE	BY
ELECTRICAL		I & V	CONTROL
		PROCESSOR	PROMOTE
PROJECT NAME			
FERRIER CENTRAL PROCESSING FACILITY			
CLIENT:			
DEVON CANADA c/o WORLEY PARSONS			
DOCUMENT NAME:			
GAS CHILLING TRAIN PIPING AND INSTRUMENTATION DIAGRAM			
 THERMO DESIGN ENGINEERING LTD. OIL & GAS PRODUCTION EQUIPMENT DESIGN • FABRICATION • INSTALLATION EDMONTON, ALBERTA, CANADA APCSA PERMIT NUMBER: P2800		P. ENCL. STAMP:	
THIS DRAWING IS THE CONFIDENTIAL PROPERTY OF TDE AND IS ISSUED ON THE UNDERSTANDING THAT NOTHING IS TO BE COPIED OR COMMUNICATED TO A THIRD PARTY WITHOUT THE WRITTEN AUTHORIZATION OF TDE.			
THE JOB NUMBER:			
12-118			
DOCUMENT NUMBER:			
DFR-10-PR-PI-0001			
ITEM	SHEET	REV.	OC