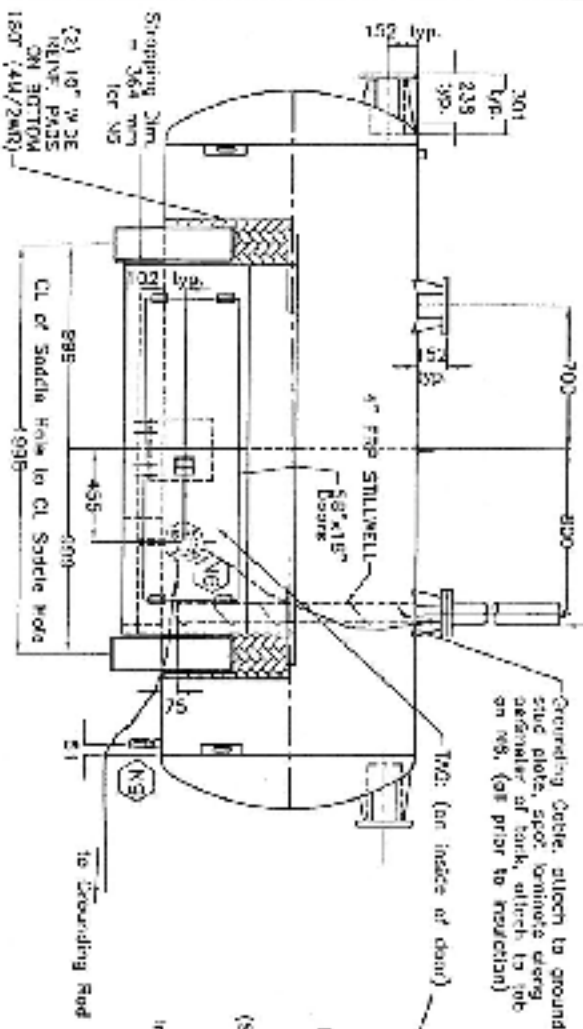


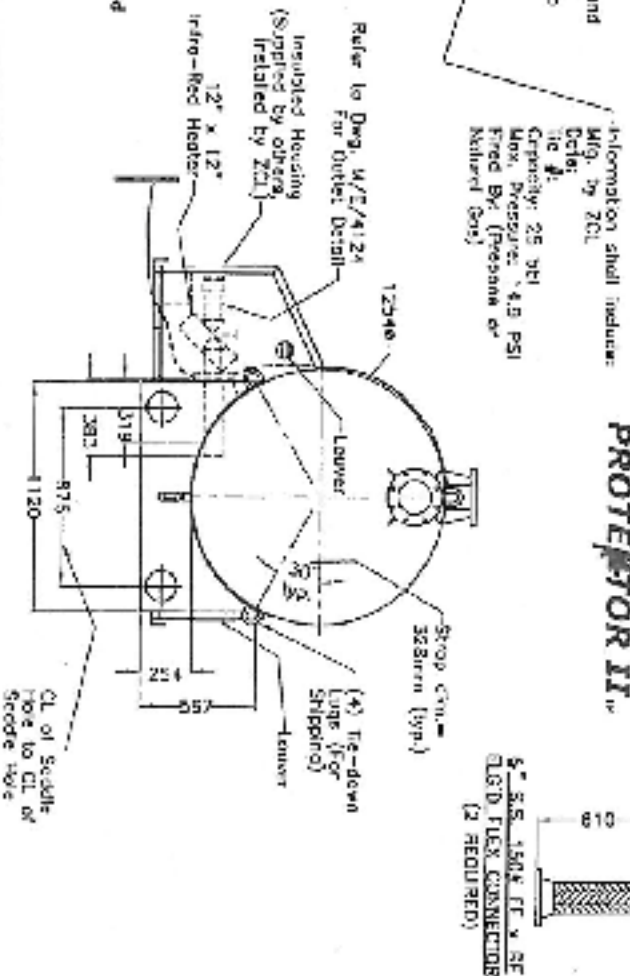
Level Gauge Assembly (purchased by ZCL, installed in field by others.)



- NOTES:
1. TANK IS DOUBLE WALL, 0.500" NOM. INTERIOR WALL IS RESIN SUITABLE FOR ALL FUELS.
 2. TANK SHALL BE COATED WITH 2" URETHANE INSULATION WITH UV COATING (GREEN).
 3. FRP SADDLES SHALL BE LAMINATED TO THE TANK.
 4. SEE INSTALLATION MANUAL FOR LEAK TESTING INSTRUCTIONS.
 5. NO GAUGE PLATES OR DIPSTICK REQUIRED.
 6. REFER TO DWG M/E/7916 FOR GROUND WIRE AROUND STILLWELL DETAIL.
 7. ZCL TO SUPPLY (1) STEEL SKID FRAME FOR PILE MOUNTING. (REF DWG M/E/8730).
 8. ZCL TO SUPPLY (1) K-TEK PROXIMITY SWITCH (MS-30EX)(HISD) VARIABLE POINT.
 9. ZCL TO SUPPLY (1) 5" ARMOR PLATED 15 PSI FUTURE DISC.

POS SIZE	DESCRIPTION	CODE #	SERVICE
N1 6"	150# FRP FLG (4 GUSSETS)	-	INLET
N2 1"	NPT STL FULL OPLG W/CL PLUG	STDC032	ANNUAL VENT
N3 -	-	-	-
N4 6"	150# FRP FLG (4 GUSSETS)	-	PRESSURE RELIEF
N5 -	-	-	-
N6 3"	150# FRP FLG (1 GUSSET)	-	OUTLET
N7 4"	150# FRP FLG (4 GUSSETS)	-	LEVEL
N8 6"	150# FRP FLG (4 GUSSETS)	-	FLARE
N9 1"	NPT STL FULL OPLG c/w NPT LEAK INDICATOR ASSEMBLY	STDC032	LEAK INDICATOR

PROTEKTOR II



ALL DIMENSIONS ARE IN INCH UNLESS OTHERWISE NOTED

304L STAINLESS STEEL
N.T.S. 1 OF 1
DRAWING NO. 1000
DATE MAY 22/02

TITLE: P400DW-25 bbl PROTEKTOR II
MURPHY OIL
LOW PRESSURE APPLICATION

PHONE: 1-800-661-8265
FAX: 1-780-466-6126

DATE

REVISION

DATE

LOW PRESSURE APPLICATION

ZCL COMPOSITES INC.
PHONE: 1-800-661-8265
FAX: 1-780-466-6126